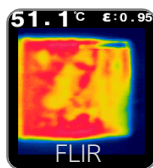


Ballistic Clay Heating Blanket

High-precision temperature conditioning of individual ballistic clay blocks



- Provides precise control of ballistic clay temperature to meet ballistic performance standard specifications.
- Consistent heating across the full front/rear surfaces resulting in consistent through-thickness heating for better test variability than possible with ovens.
- Portable and light weight design permits easy placement over the clay block for custom temperature control at the test site or other location.
- Can be custom made to suit all clay block sizes. Slips over the block and attaches with hook-and-loop fasteners.
- Internal thermostatic controller probe and digital temperature controller provides accuracy of $\pm 0.6^{\circ}\text{C}$ ($\pm 1^{\circ}\text{F}$) and heat soaking temperatures of up to 60°C (140°F)
- Durable vinyl coated fabric for long term use.
- Certified to ETL/CSA.

Specifications

Temperature Range:	Soak temperatures of up to 60°C (140°F)	Temperature Sensor:	Thermostatic probe located at centre of ballistic clay block exterior surface
Accuracy:	$\pm 0.6^{\circ}\text{C}$ ($\pm 1^{\circ}\text{F}$)	Part Number:	CHB-002 (blanket and controller)

Physical and Electrical

Dimensions:	W 635 x D 153 x H 635 mm, (W 25 x D 6 x H 25 in.) typical	Weight:	3 kg (6.6 lb) typical
Connector:	NEMA plug: 5-15 (120 VAC) or 6-15 (240 VAC) 180 mm (6 ft) long cord	Electrical:	120/240 VAC @ 50/60 Hz 5.2 Amps (120 VAC), 2.6 Amps (240 VAC) 620 Watts ETL/CSA certified

Warranty

All components:	1 year limited
-----------------	----------------

(All specifications are subject to change)